

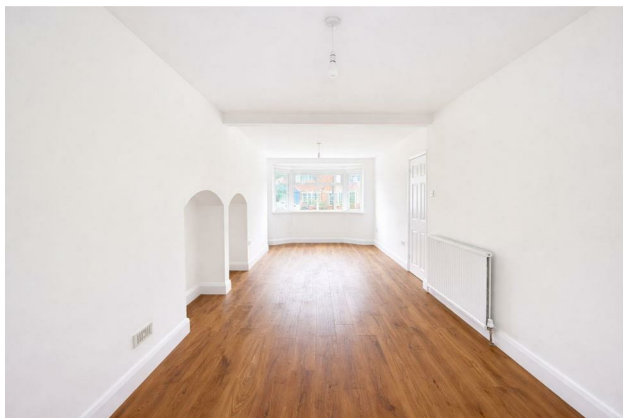
# HUNTERS®

HERE TO GET *you* THERE

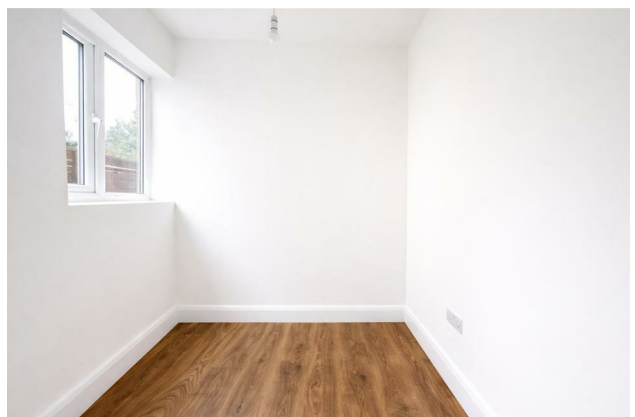
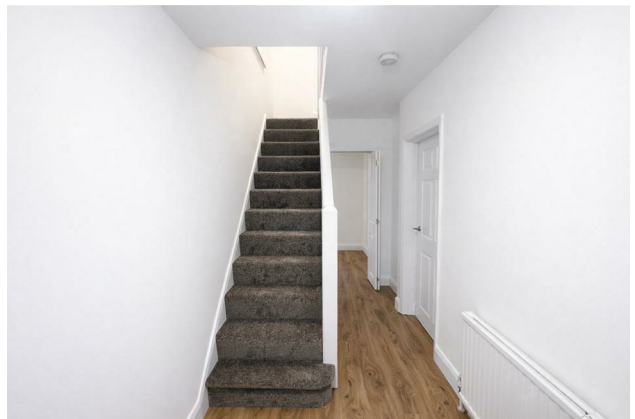
**12 Sherborne Road, Sutton, SM3 9QA**

**£2,350 Per Month**

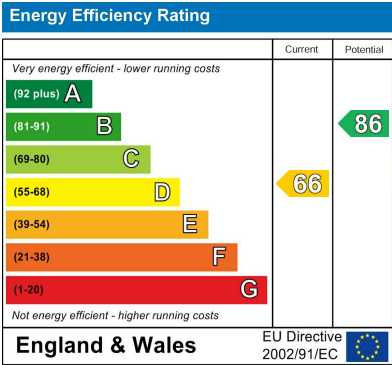
**Property Images**



## Property Images



EPC



Map



Details

Type: House - Semi-Detached    Beds: 3    Bathrooms: 1    Receptions: 2    Tenure:



## Summary

The property boasts a generous living space of 1,012 square feet, making it an ideal family home.

Upon entering, you are greeted by reception rooms, perfect for entertaining guests or enjoying quiet family evenings. The layout is both practical and welcoming, providing ample room for relaxation and socialising. The well-appointed kitchen, along with the bathroom, ensures that all essential amenities are easily accessible.

The three spacious bedrooms offer a peaceful retreat, each with its own unique character and potential for personalisation. Storage is plentiful throughout the house, allowing for a clutter-free living environment.

One of the standout features of this property is the large driveway, providing convenient off-street parking for multiple vehicles. This is a rare find in the area and adds to the overall appeal of the home.

Families will appreciate the proximity to good schools, making this location particularly desirable for those with children. The surrounding neighbourhood is friendly and welcoming, with local amenities and parks just a short distance away.

In summary, this charming house on Sherborne Road presents an excellent opportunity for those seeking a comfortable family home in a well-connected area. With its spacious rooms, ample storage, and convenient location, it is sure to attract interest from a variety of buyers. Do not miss the chance to make this lovely property your own.

### Features

- Delightful 3 bedroom semi-detached house
- Side access to the garden
- Unfurnished
- Driveway
- Bright and airy reception room
- Available NOW